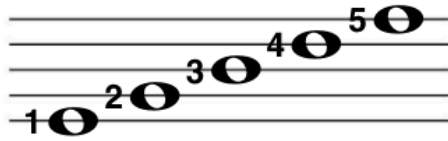


The Staff

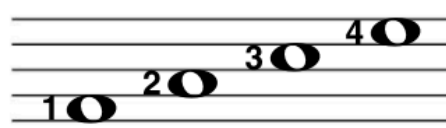
Music is written on a staff. A staff has **5 lines** and **4 spaces**.

Notes are written **on the lines** or **in the spaces** of the staff.

5 Line Notes




4 Space Notes




- On the staves below (also called staves), identify each note as a *line* or *space* note.

Bass Clef and Treble Clef

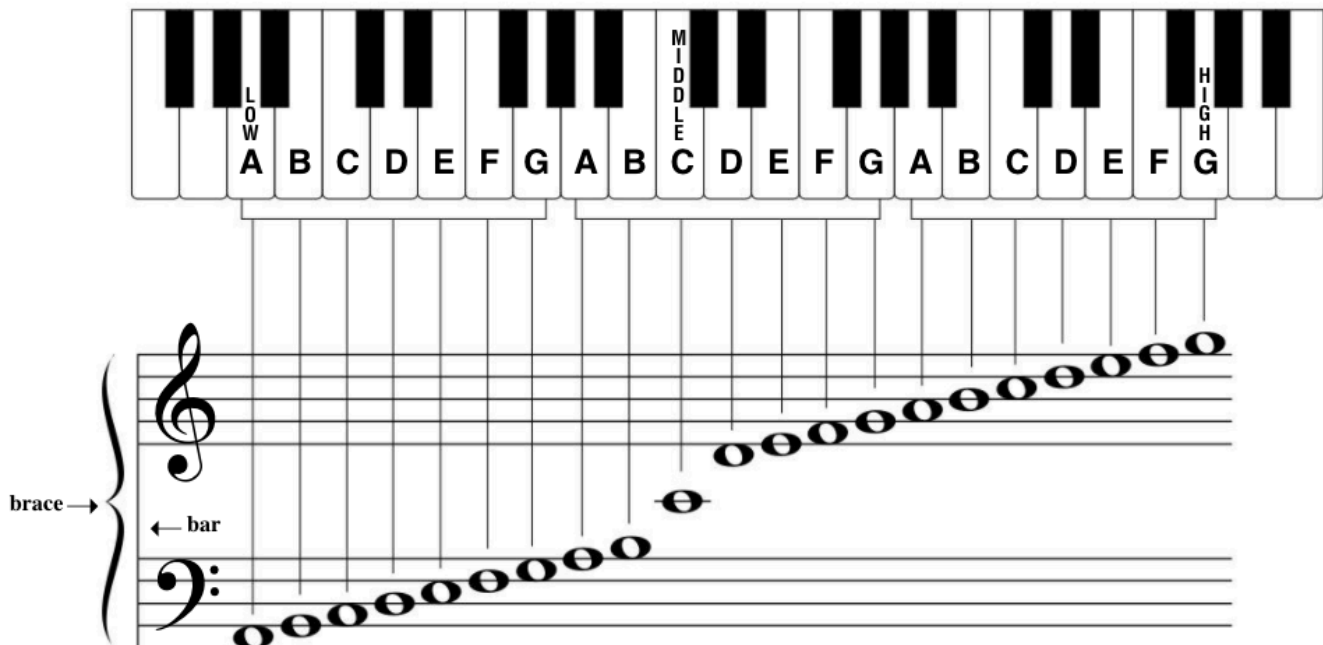
In piano music we use 2 staves (staves). Together we call them the **GRAND STAFF**.

 The **bass clef** shows notes **BELOW** Middle C. (Bass means *low* sounds.)

- Play Middle C and all the white keys *going down* to the low A shown.

 The **treble clef** shows notes **ABOVE** Middle C. (Treble means *high* sounds.)

- Play Middle C and all the white keys *going up* to the high G shown.



As notes on the staff move from a **space** to the next **line** to the next **space**, etc., they move by **2nds** (steps) on the keyboard. (See page 12.)