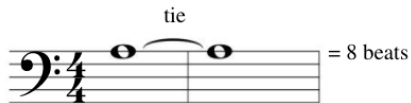


The Tie

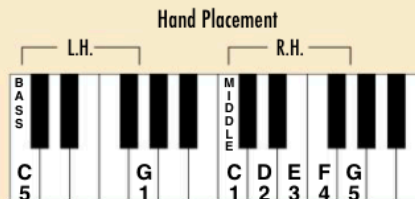
A **tie** is a curved line connecting two notes on the same line or space. It means the note will be played *once*, but held for the length of both notes combined.



Melody and Harmony

- *melody* — the tune
- *harmony* — notes played with the melody to give a rich, fuller sound.

The interval of a **5th** (C up to G) is used to *harmonize* the melody in this piece.



The Slavic composer Dvořák wrote this famous theme for his *Symphony No. 9, 'From the New World'*. "The New World" refers to America in the late 1800s.

New World Symphony Theme

Antonín Dvořák
(1841-1904, Bohemia)
arranged

Moderately flowing

3 on —? lift lift

p

1 on —? 5 on —?

5 9

13 pedal down 1 pedal up *Fine*