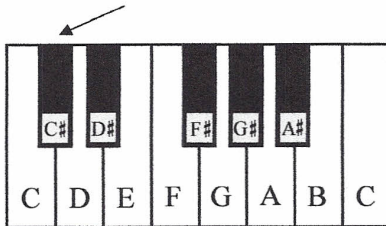


# Sharps and Flats I

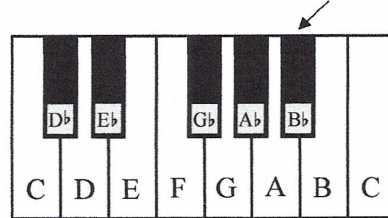
A **sharp** sign ( # ) placed in front of a note ( # )  
raises its pitch a half step.

A **flat** sign ( b ) placed in front of a note ( b )  
lowers its pitch a half step.

C# is 1/2 step higher than C

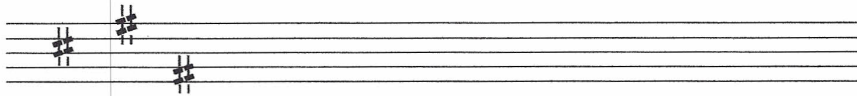


Bb is 1/2 step lower than B

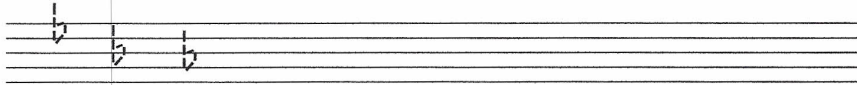


It is easy to see, on the piano keyboard, how the black keys to the right (1/2 step higher) of a note are sharps and the black keys to the left (1/2 step lower) of a note are flats.

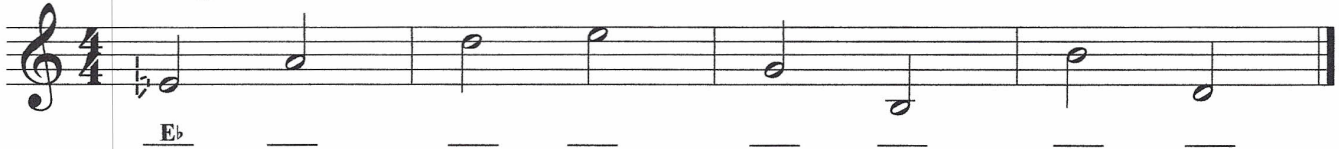
1. Practice drawing sharps by tracing over the guidelines. Draw six more in the remaining space.



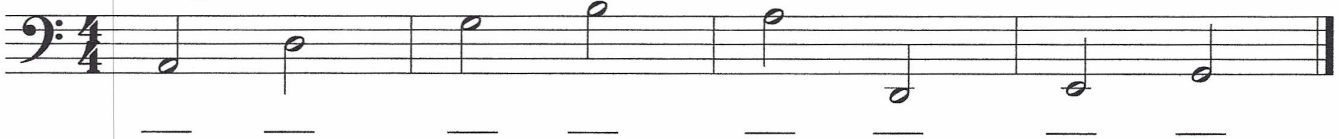
2. Practice drawing flats by tracing over the guidelines. Draw six more in the remaining space.



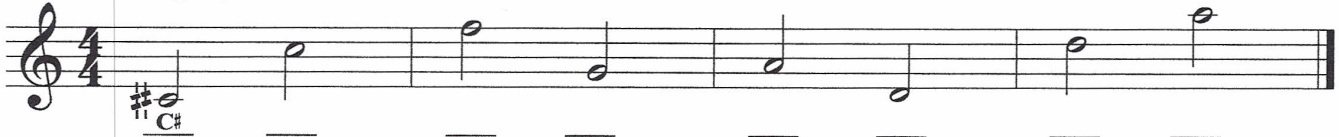
3. Write a flat sign in front of each note and then name the note.



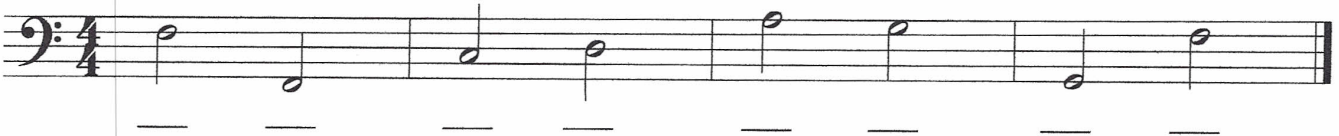
4. Write a flat sign in front of each note and then name the note.



5. Write a sharp sign in front of each note and then name the note.



6. Write a sharp sign in front of each note and then name the note.



Finale® Worksheets, Copyright © 2009 by MakeMusic, Inc.

MakeMusic grants permission to duplicate this worksheet for non-profit, educational use only, provided each copy includes this copyright notice.  
Copies may not be sold or included in any materials offered for sale to the general public.